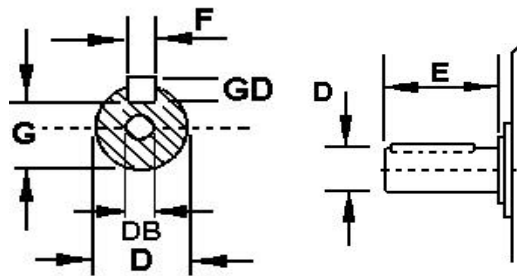


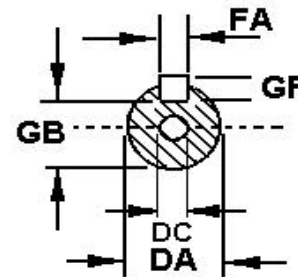
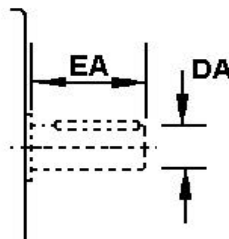
# DM1 : SHAFTDIMENSIONS



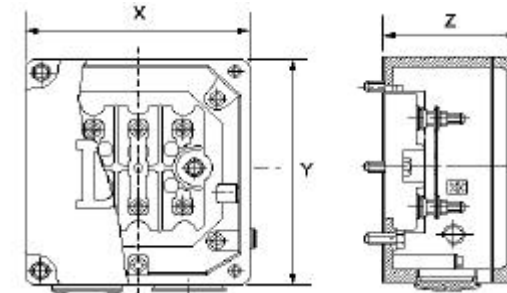
SHAFT : DRIVING-END



SHAFT : NON DRIVING-END



CONNECTION BOX



afmetingen in mm		Abmessungen in mm		dimensions in mm				dimensions en mm				EYE BOLT	IPE *	X	Y	Z		
Type	Poles	D	DA	DB	DC	E	EA	F	FA	G	GB	GD	GF					
DM1 80 K / G	2 / 4 / 6 / 8	19j6	19j6	M6	M6	40	40	6	6	15.5	15.5	6	6	NO	2 x Pg 16 / 2 x M 25 x 1,5	102	102	53
DM1 90 S		24j6	24j6	M8	M8	50	50	8	8	20	20	7	7					
DM1 90 L		28j6	28j6	M10	M10	60	60	24	24	8	8	9	9	M8	2 x Pg 21 / 2 x M 32 x 1,5	120	127	73
DM1 100 L / LX																		
DM1 112 M		38k6	38k6	M12	M12	80	80	10	10	33	33	8	8	M10	2 x Pg 29 / 2 x M 40 x 1,5	147	128	83
DM1 132 S / SX																		
DM1 132 M																		
DM1 160 M / MX		42k6	42k6	M16	M16	110	110	12	12	37	37	9	9	M12	2 x Pg 29 / 2 x M 40 x 1,5	147	128	83
DM1 160 L																		
DM1 180 M		48k6	48k6	M20	M20	140	140	16	16	49	49	10	10	M16	2 x Pg 36 / 2 x M 50 x 1,5	188	208	95
DM1 180 L																		
DM1 200 L / LX	4 / 6 / 8	55m6	48k6	M20	M20	110	110	16	16	53	53	11	11	M20	2 x Pg 42 / 2 x M 63 x 1,5	216	252	116
DM1 200 L / LX																		
DM1 225 S	4 / 8	60m6	55m6	M20	M20	140	140	18	18	58	58	11	11	M30	2 x Pg 48 / 2 x M 63 x 1,5	300	358	197
DM1 225 M	2	55m6	48k6															
DM1 225 M	4 / 6 / 8	60m6	55m6	M20	M20	140	140	18	18	58	58	11	11	M30	2 x Pg 48 / 2 x M 63 x 1,5	300	358	197
DM1 250 M	2	65m6	60m6															
DM1 250 M	4 / 6 / 8	65m6	60m6	M20	M20	140	140	18	18	58	58	11	11	M30	2 x Pg 48 / 2 x M 63 x 1,5	300	358	197
DM1 280 S	2	75m6	60m6															
DM1 280 S	4 / 6 / 8	75m6	60m6	M20	M20	140	140	18	18	58	58	11	11	M30	2 x Pg 48 / 2 x M 63 x 1,5	300	358	197
DM1 280 M	2	65m6	55m6															
DM1 280 M	4 / 6 / 8	75m6	60m6	M20	M20	140	140	18	18	58	58	11	11	M30	2 x Pg 48 / 2 x M 63 x 1,5	300	358	197
DM1 315 S	2	65m6	65m6															
DM1 315 S	4 / 6 / 8	80m6	80m6	M20	M20	170	170	22	22	71	71	14	14	M30	2 x Pg 48 / 2 x M 63 x 1,5	300	358	197
DM1 315 M	2	65m6	65m6															
DM1 315 M	4 / 6 / 8	80m6	80m6	M20	M20	170	170	22	22	71	71	14	14	M30	2 x Pg 48 / 2 x M 63 x 1,5	300	358	197
DM1 315 L / LX	2	65m6	65m6															
DM1 315 L / LX	4 / 6 / 8	80m6	80m6	M20	M20	170	170	22	22	71	71	14	14	M30	2 x Pg 48 / 2 x M 63 x 1,5	300	358	197
DM1 315 L / LX	2	65m6	65m6															

\* IPE = can be delivered in PG or in Metric.

We make all efforts to better our products. Versions, technical data and figures could be changed therefore. They are always not binding before written confirmation.